

The background features large, stylized green leaves in various shades of green, some overlapping. At the bottom, there is a horizontal bar composed of several colored segments: dark blue, teal, blue, red, orange, and light green. 

# CAMPUS WASTE INITIATIVES

2018 – 2019

• INITIATIVES FOR A GREENER CAMPUS •

# New2U

- Collect items from students when they move out
- Bedding (donated to My Brother's Keeper)
- Food goes to Arnie's Cupboard (Campus Food Pantry)
- Fall Yard Sale @ 80% off list prices
- Donate all unsold items



# Food waste collection

- Campus Center Commuter Cafeteria
  - Emptied by dining services staff
- Woodland Residential Community (1,200 students)
  - Emptied from rooms by residential students
  - Carts are consolidated by Student Staff
- Launching soon: Cedar Dell Community (750 students)
  - Students will bag their food waste, tie the bag & place in regular garbage dumpsters



# Scrap Metal / Electronics

- White goods (appliances)
- Miscellaneous scrap material (equipment racks, BBQ grills, etc)
- Computers
- TV's / Monitors
- Cables & Wires
- Printers, scanners & copiers





# Cardboard & Paper

- Still a valuable commodity in that there is some value
- Shredded paper is now in demand from organic composters



# Textiles

- Clothing Swap towards the end of the semester
- Donations taken include clothing, bedding, towels, shoes
- 2 Drop boxes on campus for daily use. Emptied every week.
- Trailer available for move out program to gather large volumes
- Do receive a small amount of cash for donations



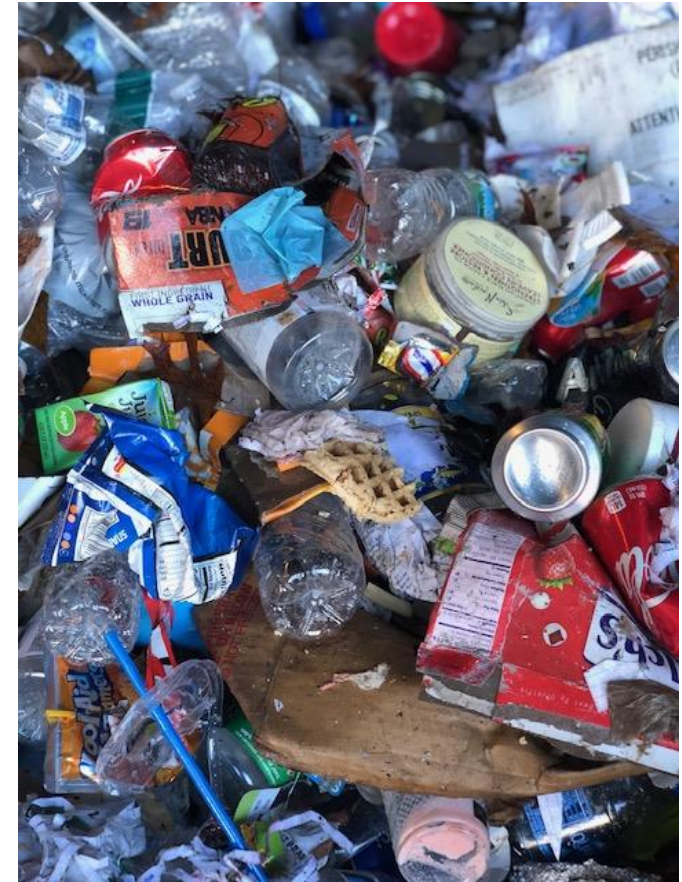
# Single stream recycling

- Movement of materials
- Innovative signage
- Focus on reducing contamination



# Contamination & Communication

- Conduct Waste Audits
  - Residential building
  - Academic buildings
- Information gleaned helps inform both staff training and messaging to students
  - Newsletters
  - Table displays in Residence Hall lobbies
  - Classroom presentations
- Considering a change in signs based on error rates or type of location (with or w/o compost option)





# Other Cool Campus-Wide things

- Building new residence halls (\$750K less in utilities to operate)
- Electric Vehicle Charging
- 269 kW's Solar Panels
- 1.6 MW's Co-Generation Plant
- Battery Storage System



# Questions?

Nancy Wiseman

Director of Operations, UMass Dartmouth Dining Services

[Nancy.Wiseman@compass-usa.com](mailto:Nancy.Wiseman@compass-usa.com)

Jamie Jacquart

Assistant Director of Campus Sustainability & Residential Initiatives

[jjacquart@umassd.edu](mailto:jjacquart@umassd.edu)