



Recycling at Wellesley College



Sustainability at Wellesley College

Published by Dorothea von Herder [?] · 24 mins ·



In 1990, the New York Times recognized Wellesley College for spearheading best practices in recycling. It's hard to believe that we are still grappling with the same issues 30 years later. Please read on.



NYTIMES.COM

Campus Life: Wellesley; Recycling Program Aims to Involve Entire Community

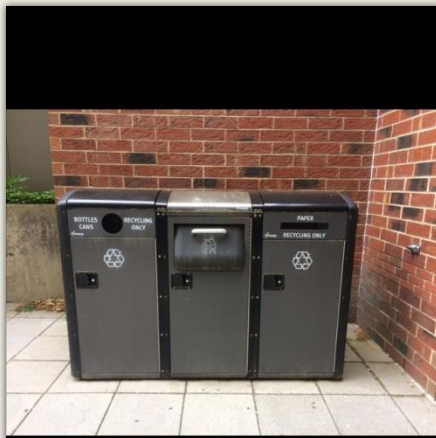
Archives | 1990 Campus Life: Wellesley;
Recycling Program Aims to Involve Entire...

How can we get there again?

Wellesley was once vanguard in recycling practices



Outdoor dual
recycling and
trash receptacles

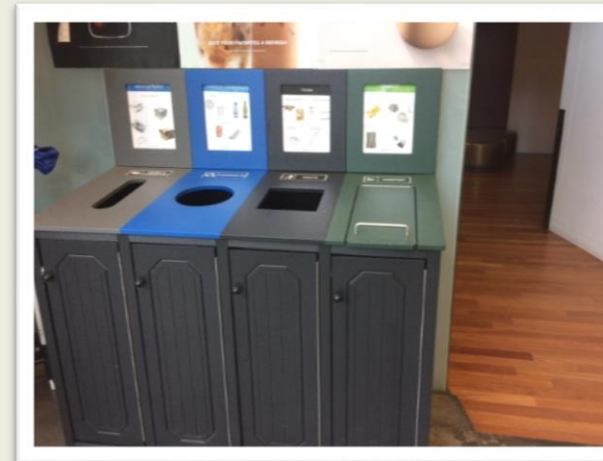




Indoor dual recycling in all fifteen res halls, and publicly accessible retail and food vendor locations such as Leaky Beaker and Emporium



In all 52 departments





Spring '19-Recycling bag for all students



RECYCLING SOLUTIONS





Food rescue initiative
collaboration between
Wellesley schools and
Olin, Babson, and
Wellesley College



F
O
O
D

F
O
R

F
R
E
E

R
E
S
C
U
E



Sept 1st
10:00-12:30 
munger basement and courtyard



fridges?
hangers?
rugs?
shower caddies?
bed risers?
pillows?
dorm supplies
school supplies
furniture
electronics



disabilityservices@wellesley.edu 781/28312434 questions: sustainability@wellesley.edu expires: 9/2



The annual move-in sale is the most popular and visible sustainability event on Wellesley campus. Several non-profits organizations take several tons of donations such as GradBag, BBBS, UTEC.



Two steps, one
step backwards

Wellesley's
ultimate goal ----
Source separated
recycling (plastics
1-6, cans, plastic
bottles, colored
and clear glass, all
paper products) via
disposal containers
on campus.
Students, staff and
faculty routinely
separate into
containers located
in several campus
neighborhoods.



Thank you for your input and comments –
May spring come!