

# Interactive Discussion on Improving the Quality of Recyclables



# Topics for Discussion

- Signage
- Educating the campus community
- Equipment
- Movement and transportation of materials

# Signage



# Bottles & Cans



## EMPTY BEVERAGE CONTAINERS

Aluminum & steel cans,  
glass jars & bottles,  
plastic bottles & containers



## NO

Liquids  
Plastic Bags  
Tissues/Paper Towels  
Styrofoam  
Food-Soiled Materials



# BOTELLAS Y LATAS



## CONTENEDORES VACÍOS

Latas del aluminio y acero,  
jarras y botellas de vidrios,  
botellas y contenedores  
de plástico



## NO

Líquido  
Bolsas de plástico,  
Pañuelos de papel/papel toalla,  
Styrofoam o materiales  
manchados por alimentos









# **Educating the Campus Community**





**Food and Beverage Cans**  
empty and rinse



**Bottles, Jars, Jugs  
and Tubs**  
empty and replace cap



**Bottles and Jars**  
empty and rinse



**Mixed Paper, Newspaper,  
Magazines, Boxes**  
empty and flatten

# NO!



**Do Not Bag Recyclables**  
**No Garbage**



**No Plastic Bags  
or Plastic Wrap**  
(return to retail).



**No Food or Liquid**  
(empty all containers)



**No Clothing or Linens**  
(use donation programs)



**No Tangles**  
(no hoses, wires,  
chains or electronics)



AN INITIATIVE OF  
THE MASSACHUSETTS  
DEPARTMENT OF  
ENVIRONMENTAL  
PROTECTION

**RecycleSmartMA.org**



@RecycleSmartMA



RecycleSmartMA



Recycle-Smart-MA



A large banner at the cafeteria entrance introduces the waste streams with color-coded icons

# Equipment















# **Movement and transportation of materials**

# Always Empty Recyclables out of Plastic Bags

Bags tangle recycling equipment causing delays, injuries and extra costs.



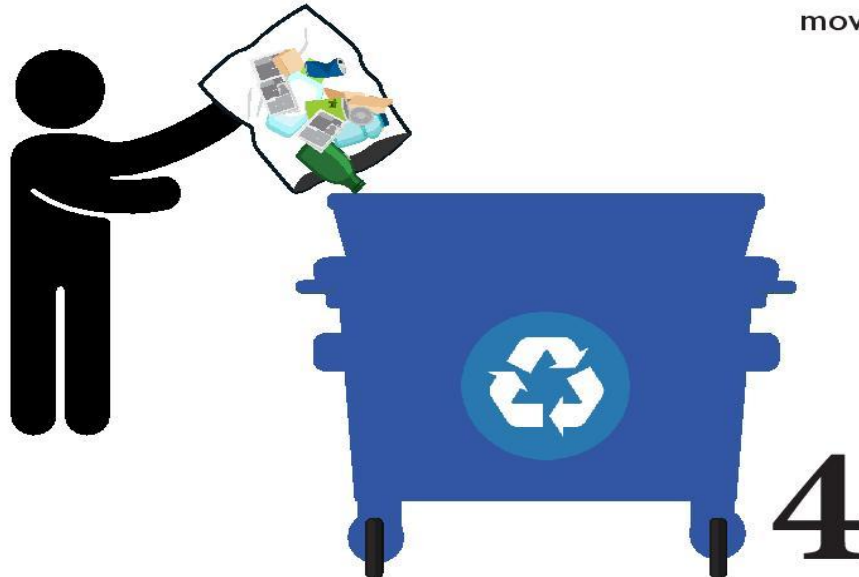
Leave recycling bags untied or loosely tied so they are easy to empty.



Pair trash and recycling bins whenever possible. Use color coded plastic bags as liners to keep bins clean and make it easier to move materials.



Color-coded plastic bags make it easier to visually differentiate so that trash doesn't get confused with recycling in one cart.



Always empty recyclables out of the plastic bag into the dumpster.



Reuse or dispose of the plastic bag in the trash.



**Thank You!**  
**On to the tour!**

RecyclingWorks Hotline  
(888) 254-5525  
[info@recyclingworksma.com](mailto:info@recyclingworksma.com)  
[recyclingworksma.com](http://recyclingworksma.com)

