



STOP & SHOP

Recycling Efforts



Review

- ▶ Corrugated OCC
- ▶ Waxed Corrugated
- ▶ Plastic Corrugated (Asparagus/Celery etc.)
- ▶ Plastic Bags & Shrink
- ▶ Pharmacy Stock Bottles
- ▶ Rigid Plastic
- ▶ Plastic Corner Boards
- ▶ Miscellaneous Metal

Corrugated Bales



- Stores bale corrugated cardboard
- Bales average 900 lbs.
- Consolidated at distribution
- Rand Whitney processes material in the U.S.
- Over 170 M lbs. YTD
- Currently \$75 Ton

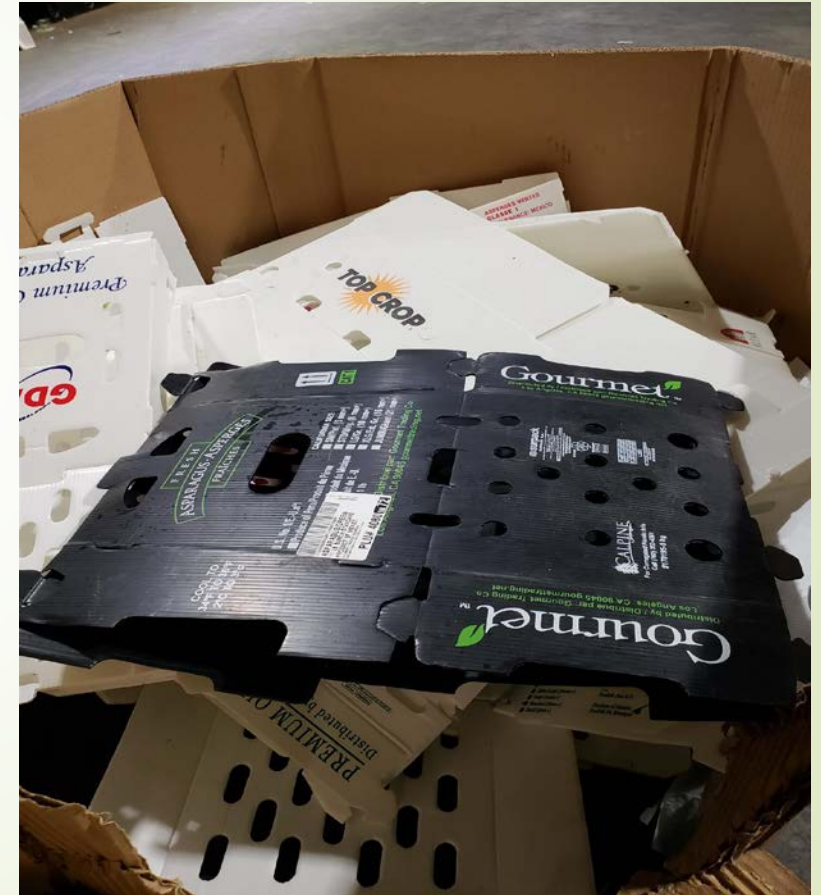
Waxed Corrugated



- Stores fill watermelon bins
- Material is compacted at distribution facility
- Rand Whitney hauls compactors via ABC
- Rand Whitney bales and ships overseas
- 1.62 M Lbs. processed YTD

Corrugated Plastic

- Stores fill watermelon bins
- Material is baled at distribution facility
- Rand Whitney processes with rigid plastic



Rigid Plastic



- Stores clean and bag material
- Many drawbacks to material
- Minimal participation
- Rand Whitney processes
- Material processed with corrugated plastic

Plastic Bags & Shrink

- Stores collect and send to distribution in large bags
- Distribution bales material
- Bales average 2,200 lbs.
- Material is shipped to Trex
- Material is pelletized
- End result is Trex lumber



Pharmacy Stock Bottles



- Pharmacy sends to distribution in large bags
- Distribution consolidates and ships to Trex
- Trex processes with plastic bags and shrink film

Corner Boards



- ▶ Plastic corner boards from product received in distribution
- ▶ Mainly banana pallets
- ▶ Home made containers utilized to collect material
- ▶ Shipped to Angleboards in S.C.



Thank you!

Roger Beliveau

Manager of Distribution Services, Stop & Shop

rbelivea@stopandshop.com