

# Reducing Furniture in Solid Waste

*through reuse & recycling*



# Furnishing our Landfills



- According to the EPA, construction and demo waste accounts for 40% of landfill substance
- It is estimated that Corporate Furniture makes up over 3 million tons of that waste
- In Massachusetts that translates to roughly 310,000 TONS of corporate furniture going into our waste stream **every year**
- That's "only" about 6% of waste in our state, but that's still 310,000 tons of material that doesn't need to hit the waste stream to begin with

# Running the Numbers

310,000 TONS of furniture

Equal to:  
almost 1 million  
workstations

Or

nearly 20,000 tractor  
trailer loads



# Generating Waste

Every year hundreds of businesses in and around greater Boston undergo some type of capital improvement project.

- Relocation
- Renovation

Excess furniture and supplies are the unfortunate by-product of these activities. While seating and files are sometimes relocated or reused, private office, workstation and ancillary furniture rarely is.



# Why?

- Change in brand/design aesthetic
- Change in corporate culture
- Change in the structure, layout and how people work
- Fully depreciated furniture is more expensive to move than new furniture is to purchase

For all of these reasons and more, the sad reality is that millions of square feet of still usable furniture enters our waste stream every year.



There must be something we can  
do...



# Putting the Pieces Together

- Most people want to do the right thing with their unwanted furniture
- And many do, but on a small scale
  - One of the reasons for this is that no systems were in place to handle large scale furniture disposition projects in a socially and environmentally friendly way

Tired of seeing truckloads of still usable furniture carted off to landfills, sent overseas, or sent to languish in warehouses, like-minded industry professionals decided it was time to do something about it.

In 2008, The Furniture Trust was born.

## The Furniture Trust

As a nonprofit organization, The Furniture Trust strives to provide socially and environmentally responsible solutions for the disposition of office furniture through donations and recycling. Our goal is to keep furniture out of landfills while also giving back to the local community.





# Why Donate?

**Value Proposition: Support your Triple Bottom Line**

- **Socially Responsible**

Excess office furnishings are converted into direct furniture and cash donations to local nonprofits and schools –

**REINVEST IN YOUR COMMUNITY**

- **Environmentally Responsible**

Unwanted furnishings and supplies will not end up in a landfill

- **Financially Responsible**

Streamlined, turnkey approach saves money – single source accountability maximizes efficiency; dumpsters are not engaged; AND there is a potential tax write-off



# **The Nitty Gritty....**

## **How Does it Work?**



# Sustainability Made Easy

The Furniture Trust offers a turnkey solution for furniture disposition:

## HOW IT WORKS

SCOPE	PLAN	DONATE	CLOSE OUT
<ul style="list-style-type: none"><li>• Understand client goals: donation, schedule, budget</li><li>• Survey existing conditions: loading dock, freight, site constraints</li><li>• Qualify product inventory</li></ul>	<ul style="list-style-type: none"><li>• Solicit bids for dismantling, removal</li><li>• Market product to local schools, nonprofits, recyclers</li><li>• Develop final schedule, budget, donation plan</li></ul>	<ul style="list-style-type: none"><li>• Schedule all vendors &amp; recipients</li><li>• Supervise furniture dismantling &amp; removal</li><li>• Monitor vendor time &amp; recipient donations</li></ul>	<ul style="list-style-type: none"><li>• Track vendor invoices &amp; payment</li><li>• Quantify donations and recycling content</li><li>• Provide client with close out package</li></ul>

# Why The Furniture Trust?

- Skilled project managers and administrative team handle your project on time and on budget
- Single source accountability – The Furniture Trust will manage all aspects of your furniture disposition
- Your furniture won't end up in a landfill
- You will help deserving organization in your own backyard
- Potential tax incentives
- 97 cents of every dollar goes toward our mission!

# Make an Impact

## Success Stories

It doesn't have to end with a landfill... extend the lifecycle of unwanted, but still usable furniture.

By using donated goods, a nonprofits capital expenditures are reduced, which increases the available funds to advance their missions.

# Who We Help

*At The Furniture Trust, we strive to keep donations local and give back to deserving organizations right in our own backyard.*

Medford Public Schools  
Brocton Public Schools  
City on a Hill  
Codman Health Center  
Boston Green Academy  
Chelsea Shore Collaborative  
BUILD  
Kit Clark Senior Day Center  
Boston Harbor Association  
Cradles to Crayons  
Boys and Girls Clubs (various)  
Globe Santa  
Veritas Charter School  
South Boston Neighborhood  
House  
New England Shelter for  
Homeless Veterans  
Lawrence Community Works  
AIDS Action Committee  
Career Collaborative  
Chelsea Collaborative Schools  
Boston Fire Department

Boston Public Schools  
Mass Challenge  
Cambridge Fire Department  
CCTV Cambridge  
Heading Home  
Roxbury Youthworks  
Jumpstart  
Women's Lunchplace  
Women's Bar Association



In November alone we helped 11 nonprofits

Father Bills Mainspring

GBNCC

Grow Native

Build

Friends of the Elderly

Cambridge Family and Children Services

Brockton Public Schools

Quincy Public Schools

Andrews Middle School

Cristo Rey High School

Just a Start

**We donated over 490 items  
with a fair market value  
of almost \$85,000!!!**



## Sponsoring Innovation and Creativity

With furniture donated by corporate clients, The Furniture Trust created and sponsors an annual Eco-carpentry contest which challenges local High Schools to create new products using desks, bookcases and chairs as their raw materials.

Last year seven schools competed for prize money totalling over \$6,000 the top scoring schools were:

- \* Best in Class: Hopedale High School - School cafeteria fixture for condiments and utensils.
- \* Maximum and Best Reuse of Raw Materials: Taunton High School - Game room set which included a skee ball set, wall art and gaming chair all in Taunton Tiger black and orange.
- \* Best Commercial Application: Medford Vocational Technical High School - Full service bar with two stools and electric TV stand.
- \* Most Unique and Creative Product Produced: Youthbuild Lawrence - Gardening table with chair, memorial bench and "solitude seat" for studying.
- \* People's Choice: Medford Vocational Technical High School.













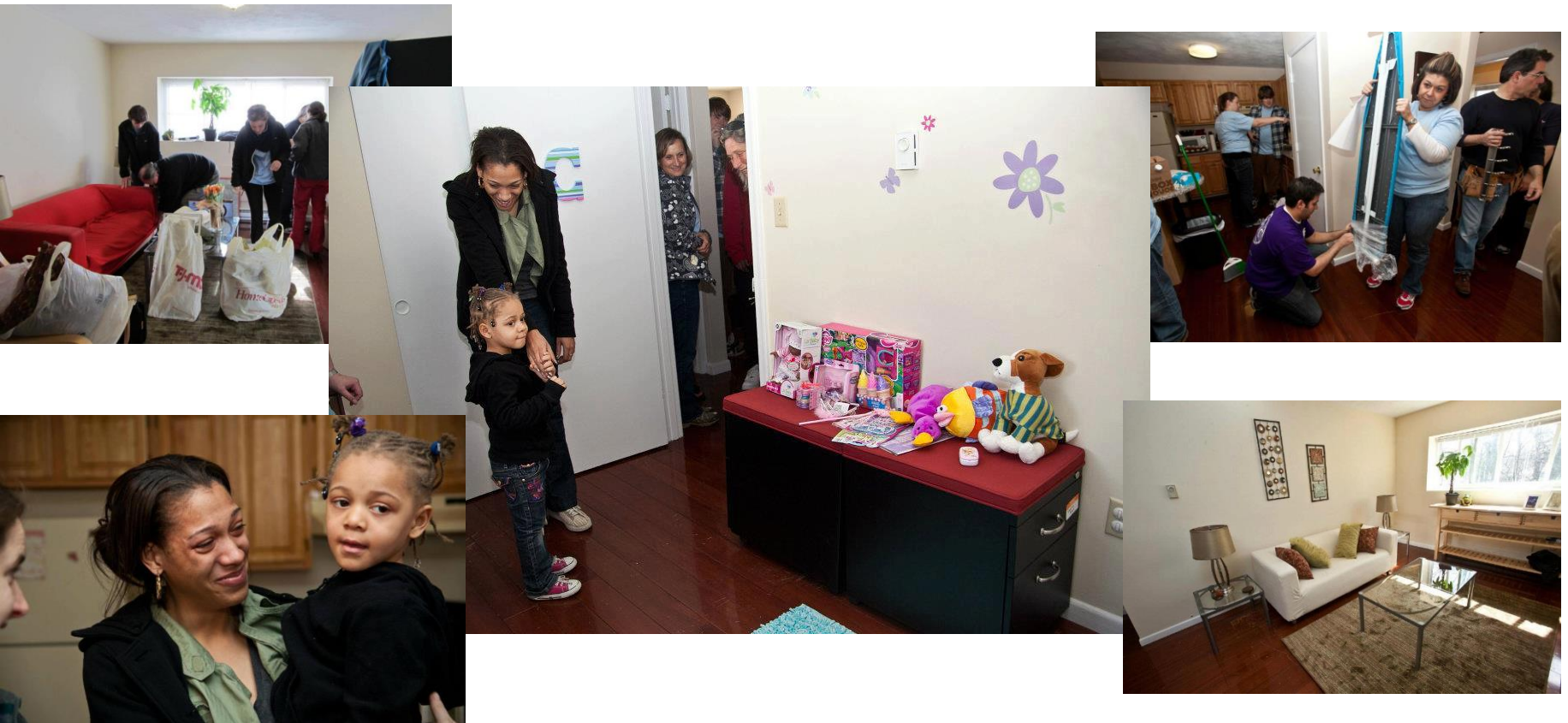








When Brightcove outgrew their space in Cambridge they relocated to Boston, leaving behind the furniture they had also outgrown. Working with The Furniture Trust to donate their no longer needed items, they were able to help many local nonprofits, including Cambridge Cable Television, American Public Television, Heading Home, Brockton Public Schools, Veritas Charter School, The Citizens School and The Boston Fire Department.



# Hurricane Sandy Relief

In the aftermath of Hurricane Sandy, The Furniture Trust mobilized local partners to send a trailer of furniture and supplies to a Boys and Girls Club and the Hoboken Dual Language Charter School in Hoboken New Jersey. The building that housed both organizations had been devastated by the storm.





[www.thefurnituretrust.org](http://www.thefurnituretrust.org)

Michelle Blakemore  
Education and Outreach Manager  
[mblakemorefaroni@thefurnituretrust.org](mailto:mblakemorefaroni@thefurnituretrust.org)  
617.997.7043