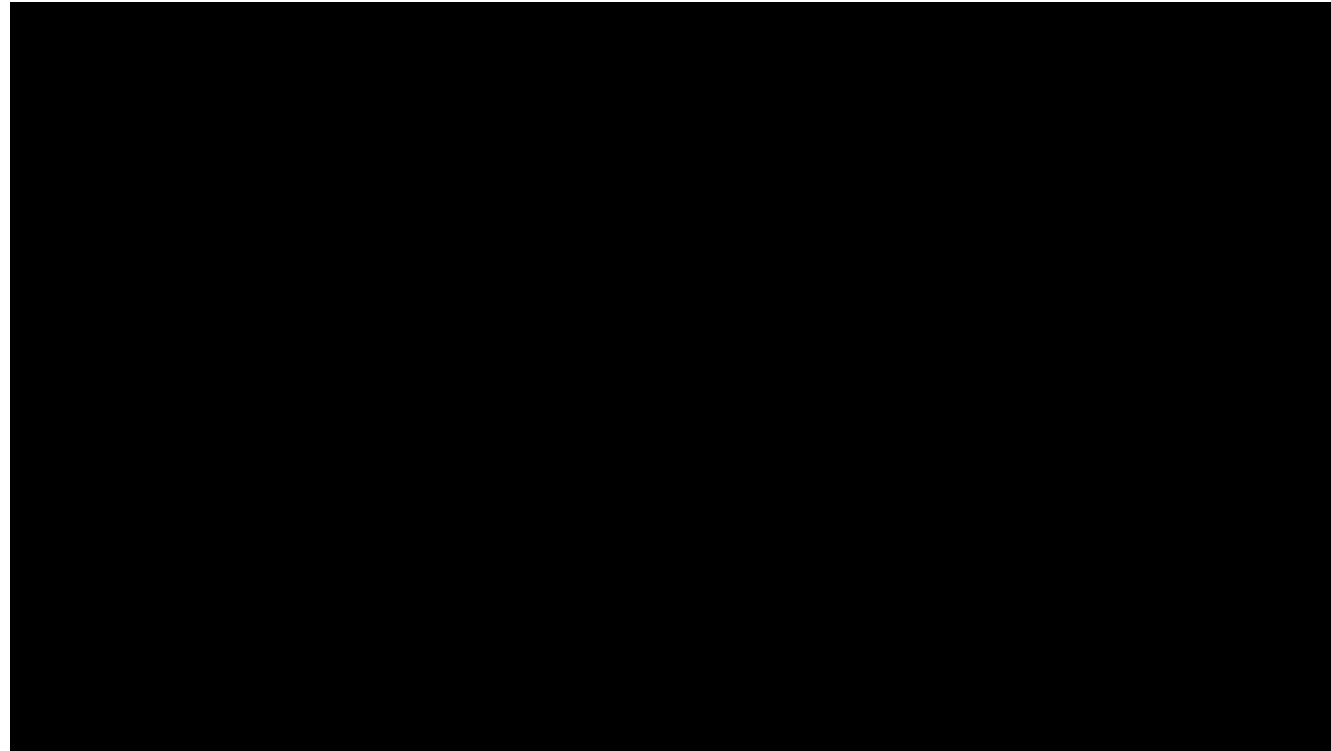


# 2019 SPRING WASTEWISE FORUM



# What is RecyclingWorks?



<https://recyclingworksma.com/about-recyclingworks/>

# FREE ASSISTANCE FOR BUSINESSES & INSTITUTIONS



RecyclingWorks MA is funded by MassDEP, delivered under  
contract by the Center for EcoTechnology

[recyclingworksma.com](http://recyclingworksma.com)

# Bottles & Cans



## EMPTY BEVERAGE CONTAINERS

Aluminum & steel cans, glass jars & bottles, plastic bottles & containers



## NO

Liquids  
Plastic Bags  
Tissues/Paper Towels  
Styrofoam  
Food-Soiled Materials



# Food Scraps



## COMPOST

### All Food Scraps Napkins & Paper Towels

Fruits, vegetables, dairy, bread, grains, meat & fish, bones & shells, eggs



## NO

No gloves, plastic, wrappers  
Styrofoam, or any other trash



# RECICLAGEM MISTA/RESIKLAJ MELANJE

## Vasilhas de bebidas vazias

Alumínio, aço, jarras e garrafas de vidro, garrafas ou vasilhas de plástico

## Kontnè bweson ki vid

Aliminyòm, asye, bokal ak boutèy an vè, boutèy ak kontnè an plastik

## Papelão desmontado

## Papye ak bwat katon plati

## NÃO

Líquidos, sacolas plásticas, lenços e toalhas de papel, Isopor, materiais sujos de comida

## NON

Likid, sache an plastik, sèvyèt an twal / an papye, Stiwofom, Bagay ki gen kras manje



# River Valley Co-op

**NATURE HAS AMAZING PACKAGING**

**NO BAG NEEDED**

*FOOD BIODEGRADES, PLASTIC DOES NOT*  
**OUR PLANET THANKS YOU!**



**DID YOU PRE-WEIGH  
YOUR JAR?**

**BRING YOUR OWN  
CONTAINERS TO CUSTOMER  
SERVICE FOR A TARE WEIGHT.**



# Always Empty Recyclables out of Plastic Bags

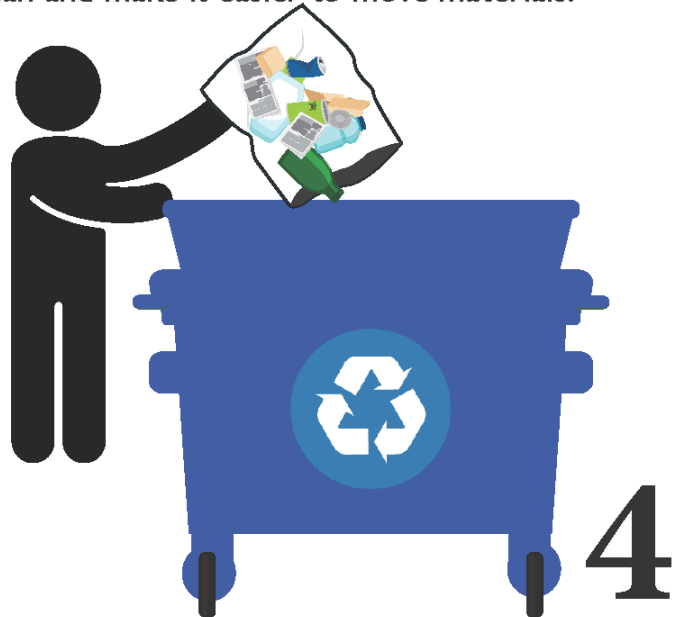
Bags tangle recycling equipment causing delays, injuries and extra costs.



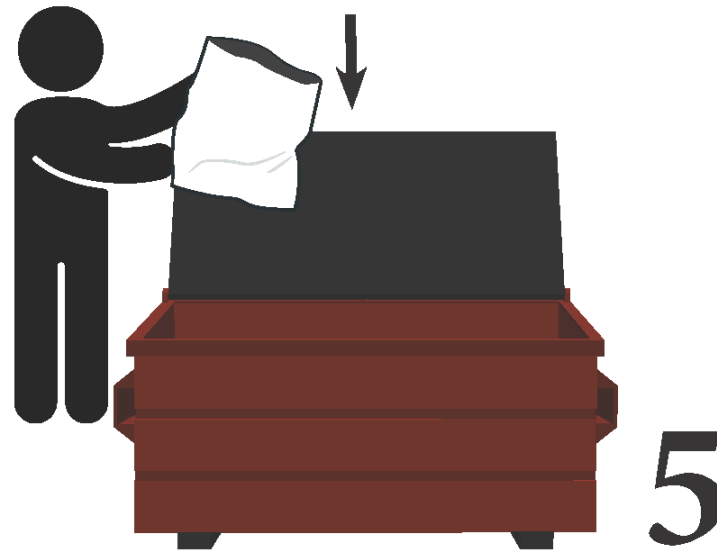
Pair trash and recycling bins whenever possible. Use color-coded plastic bags as liners to keep bins clean and make it easier to move materials.

Leave recycling bags untied or loosely tied so they are easy to empty.

Color-coded plastic bags make it easier to visually differentiate so that trash doesn't get confused with recycling in one cart.



Always empty recyclables out of the plastic bag into the dumpster.



Reuse or dispose of the plastic bag in the trash.

# RecyclingWorks Website Resources



# Source Reduction Guidance

- Waste tracking
- Meal planning
- Food purchasing and procurement
- Storage
- Reduction strategies
  - Back of house
  - Front of house

[recyclingworksma.com/source-reduction-guidance/](https://recyclingworksma.com/source-reduction-guidance/)



# C&D Best Management Practices

- Regulatory Requirements
- Waste Management Plans
- Deconstruction & Demolition
- Materials Reuse
- Recycling
- Technical Assistance for Large C&D projects

[recyclingworksma.com/construction-demolition-materials-guidance/](http://recyclingworksma.com/construction-demolition-materials-guidance/)



# Office Furniture & Equipment Reuse Best Management Practices

- Best management practices based on stakeholder feedback
- Learn about reuse outlet options
- Develop a plan for furniture reuse and identify outlets



# MA State Facilities Environmentally Preferable Products (EPP) Procurement Programs

- Specifications for sustainable products on Massachusetts statewide contracts
- Contain items that contain recycled materials, minimize waste

[www.mass.gov/environmentally-preferable-products-epp-procurement-programs](http://www.mass.gov/environmentally-preferable-products-epp-procurement-programs)



## Environmentally Preferable Products Index

Below please find links to alphabetical listings of environmentally preferable products available on OSD's Statewide Contracts.

### TABLE OF CONTENTS

- ▼ [Alternative Snow and Ice Products](#)
- ▼ [Alternative Vehicle Technologies](#)
- ▼ [Antifreeze - Remanufactured](#)
- ▼ [Art and Instructional School Supplies, Environmentally Preferable](#)
- ▼ [Bio-based Lubricants, Equipment and Automotive](#)
- ▼ [Biodiesel](#)
- ▼ [Building Materials and Supplies](#)
- ▼ [Cleaning Products, Programs, Equipment, and Supplies, Environmentally Preferable](#)
- ▼ [Clothing, Environmentally Preferable](#)
- ▼ [Compostable/Bio-degradable Dishware Supplies](#)

# Business Sector Guidance

- Colleges and Universities
- Elementary and Secondary Schools
- Hospitality
- Hospitals
- Offices
- Restaurants
- Retail
- Stadiums/Venues
- Supermarkets

<https://recyclingworksma.com/how-to/business-sector-guidance/>



# Tips for MA Waste Ban Compliance

- Restaurants
- Retailers
- Food Manufacturers & Distributors
- Colleges & Universities (coming soon)

<https://recyclingworksma.com/waste-bans-and-compliance/>



## HOW TO COMPLY

Identify what waste ban materials your business regularly disposes of and work with your hauler to set up or improve your business' recycling program for those materials.

### KNOW YOUR WASTE

You may not know exactly what materials are in your business' trash bins. Take a look in your waste barrels and dumpsters to learn what waste ban items your business regularly throws away.

### COMMUNICATE WITH YOUR HAULER

Talk to your waste hauler to learn about options for adjusting your dumpsters/compactors so your business can recycle all waste ban materials. When you set up or improve your recycling program, you will likely be able to reduce the size or pickup frequency of your trash container which can create cost savings.

Just as it is important to keep recyclables out of the trash, it is equally important to keep trash out of recycling containers. Work with your hauler to identify which materials are accepted at your recycling outlet and which are not. Common contaminants include plastic bags, straws, wrappers, Styrofoam, and rubber gloves. Food waste is also considered a contaminant when it is commingled with recyclable materials such as cardboard, cans, or bottles.

Request that your hauler provide you with direct and immediate feedback on waste ban materials observed in your trash containers or when they receive notice about waste ban failed loads from solid waste facilities. This is particularly important if your business has a compactor or roll-off container, as drivers can observe and identify waste ban materials in these loads at the disposal site.

If you rely on equipment such as a baler or compactor for your recycling, talk with your hauler about back up plans to ensure that materials can continue to be recycled if equipment requires repair or replacement.

### SIGNS

Clearly label all trash, recycling and food waste containers. Customize these signs to include the specific needs and waste materials at your facility.

### TRAINING

Regularly train staff on how to recycle and separate food waste. Watch the RecyclingWorks Kitchen Source Separation Instructional Video for tips on training your staff on how to collect food scraps separately from trash: <https://youtu.be/5il296nTFc4>. For more information on working effectively with your hauler to set up a recycling or composting program, see RecyclingWorks Guidance for Businesses Contracting for Trash, Recycling, and Food Waste Services: [www.recyclingworksma.com/hauler-contracting-bmp](http://www.recyclingworksma.com/hauler-contracting-bmp).

RecyclingWorks in Massachusetts is a free assistance program that helps businesses reduce waste, and maximize recycling, reuse, donation, and composting opportunities. Contact RecyclingWorks for customized assistance for your business, including how to:

- Start or improve recycling and food waste diversion
- Comply with Massachusetts waste ban regulations
- Find haulers and processors of recyclable materials
- Provide employee training and signage
- Save money on waste removal





# RecyclingWorks Case Studies

Dozens of video and written case studies

Filter by industry or material

<https://recyclingworksma.com/case-studies/>



Call our Hotline  
1 (888) 254-5525  
info@recyclingworksma.com  
www.recyclingworksma.com

### Food Donation Programs Case Study

*Food donation is a critical part of reducing waste. Businesses across many sectors donate surplus food to reduce waste, feed hungry people, and increase the bottom line. This case study provides an overview of food donation programs at The Westin Boston Waterfront Hotel and Whole Foods Market in Medford, outlining the steps each business took to build a program that successfully diverts nutritious and delicious food from disposal and provides it to people in need.*

#### AT-A-GLANCE

- Building strong relationships with a partner organization is key to the success of both businesses' food donation programs.
- Food donation programs can have tax incentives and reduce disposal costs.
- Businesses that donate food are legally protected from liability under the Bill Emerson Good Samaritan Act.

#### Whole Foods Market, Medford



##### Program Overview

Whole Foods Market in Medford is a supermarket with grocery, produce, deli, prepared foods, bakery, and seafood departments. Whole Foods reduces waste by operating robust recycling, food donation, and composting programs.

Whole Foods Market in Medford has been donating food since opening in May of 2008. In 2014, Whole Foods expanded its donation program with assistance from Food Donation Connection (FDC), a company that connects food service businesses interested in donating surplus food to social service agencies that distribute the food to people in need. FDC introduced Whole Foods to Food Link, a volunteer-powered food rescue non-profit that connects surplus food, and items nearing the expiration date, to food insecure individuals.


Each day, Whole Foods staff take inventory of surplus and unsaleable food items. Staff members place smaller items, such as bagels and pastries, into 13-gallon food-safe donation bags and place larger items into unused banana boxes or 30-gallon donation bins. Employees store perishable donations in a walk-in refrigerator, and place non-perishable foods on shelves near the store's loading dock.


At Whole Foods, the Food Link volunteers divide and sort food items according to which hunger relief agencies will receive food that day. Food Link volunteers use four-wheeled



RecyclingWorks in Massachusetts is funded by MassDEP and delivered under contract by the Center for EcoTechnology

## Food Donation

RecyclingWorksMa  December 29, 2018



Food Donation | Recycling Works MA

Watch later Share

QUESTIONS?

RecyclingWorks Hotline  
(888) 254-5525  
info@recyclingworksma.com  
recyclingworksma.com

