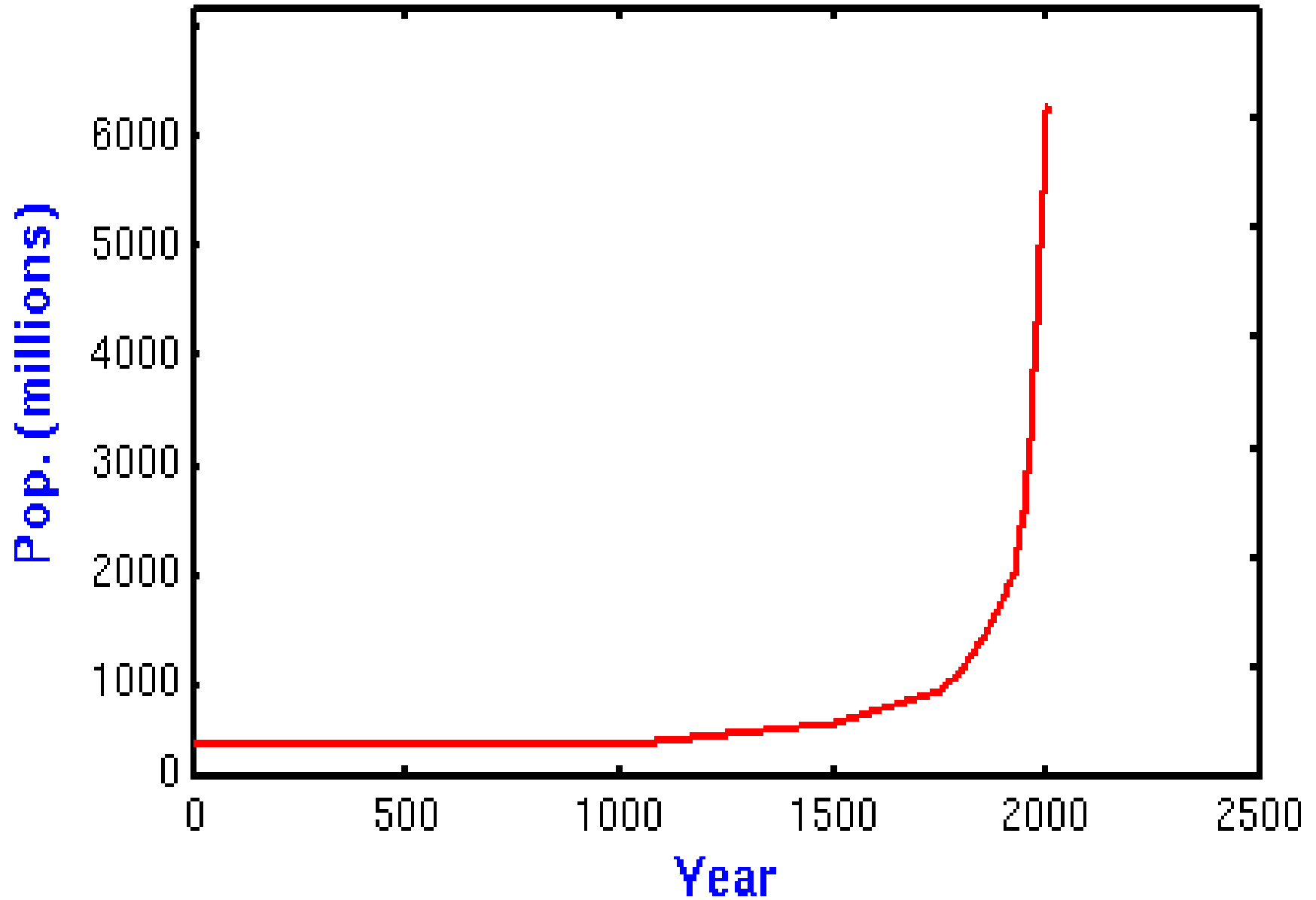


We Voluntarily Participate in



Conserving Resources,  
Preventing Waste

# World Population, 1AD-2001

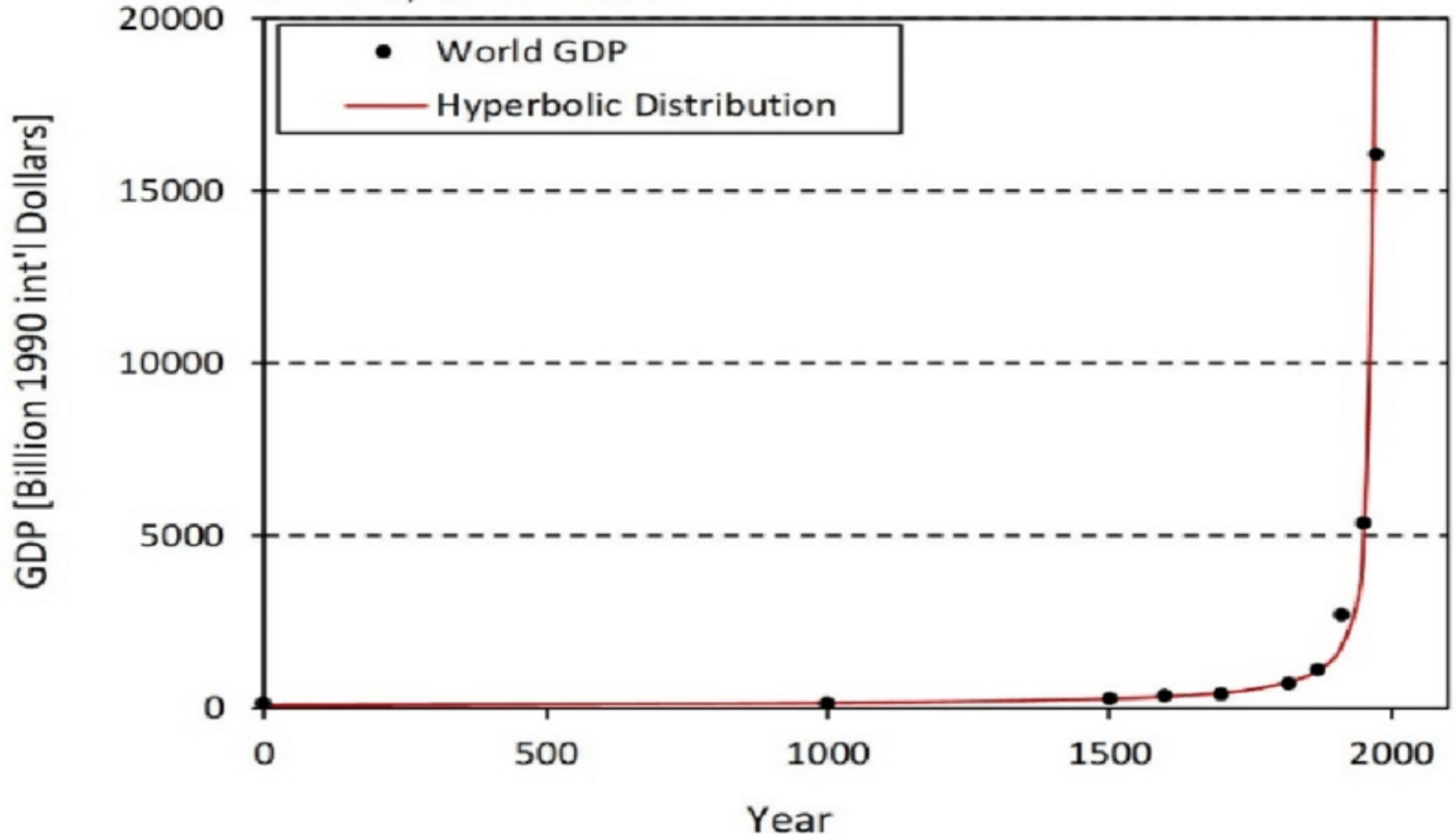


# Gross World Product (GWP)

(0 AD – 2000 AD)

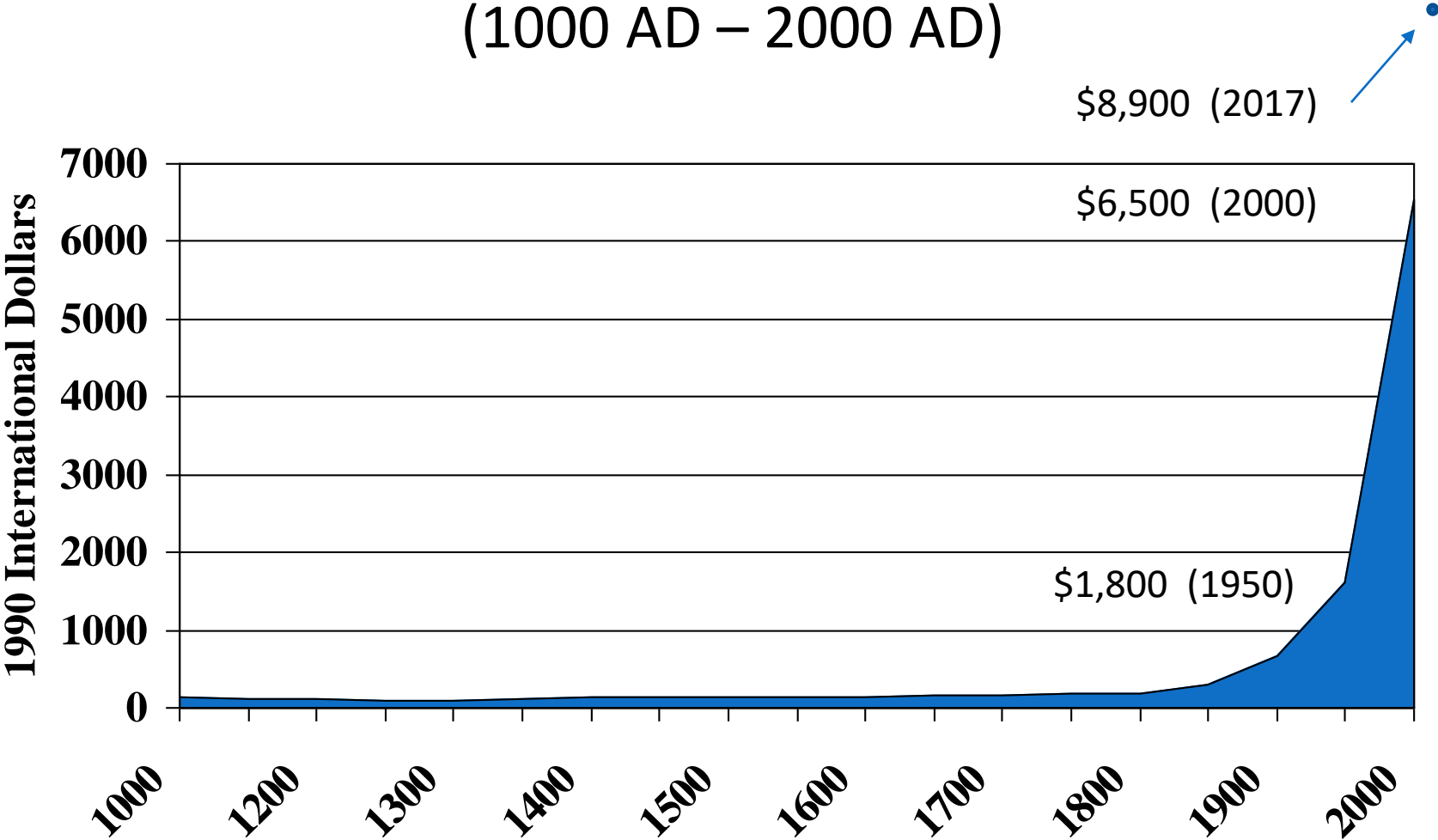
© 2018 by Ron W. Nielsen

\$40 Trillion in 2014

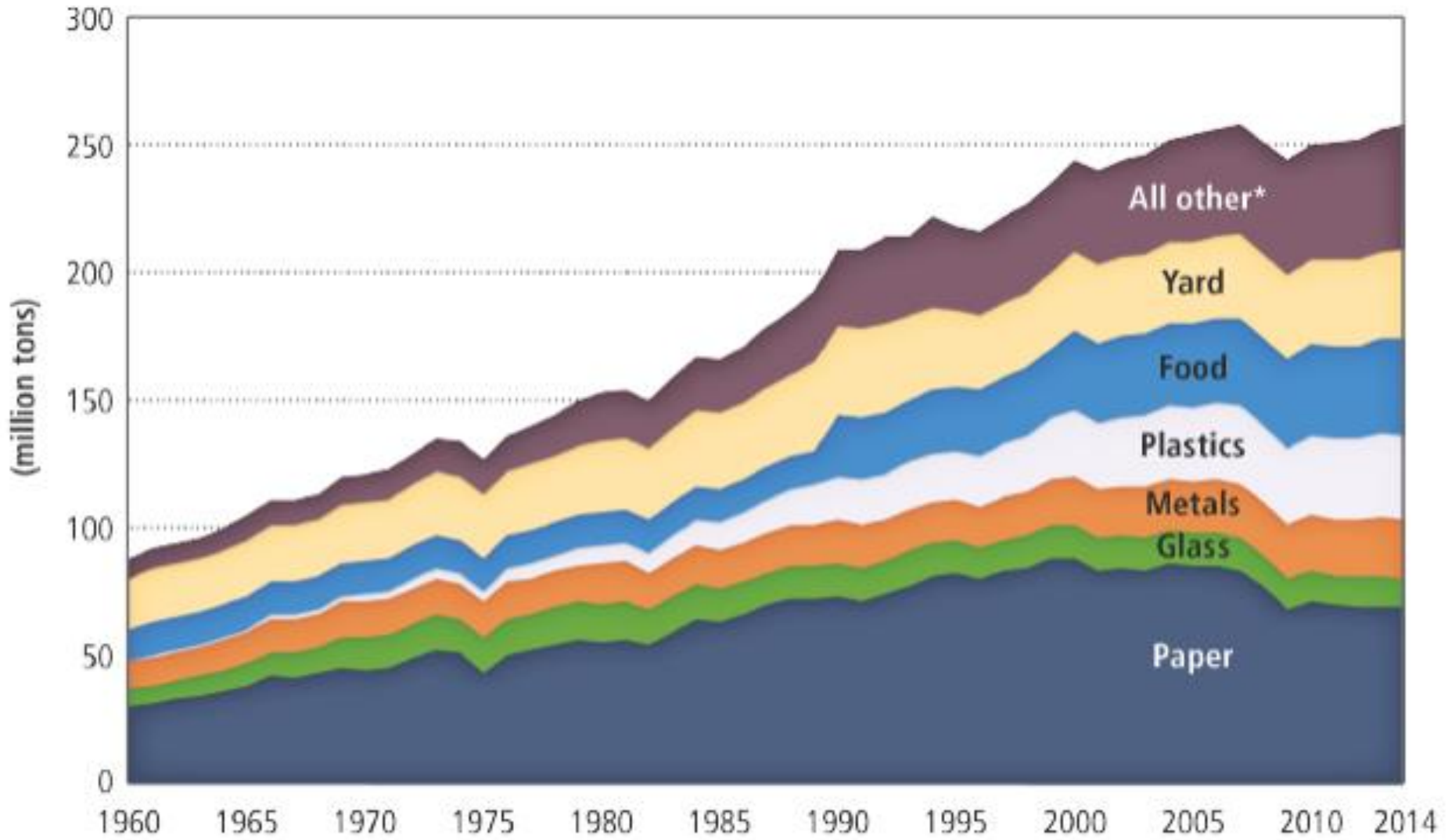


# Gross World Product per Capita

(1000 AD – 2000 AD)

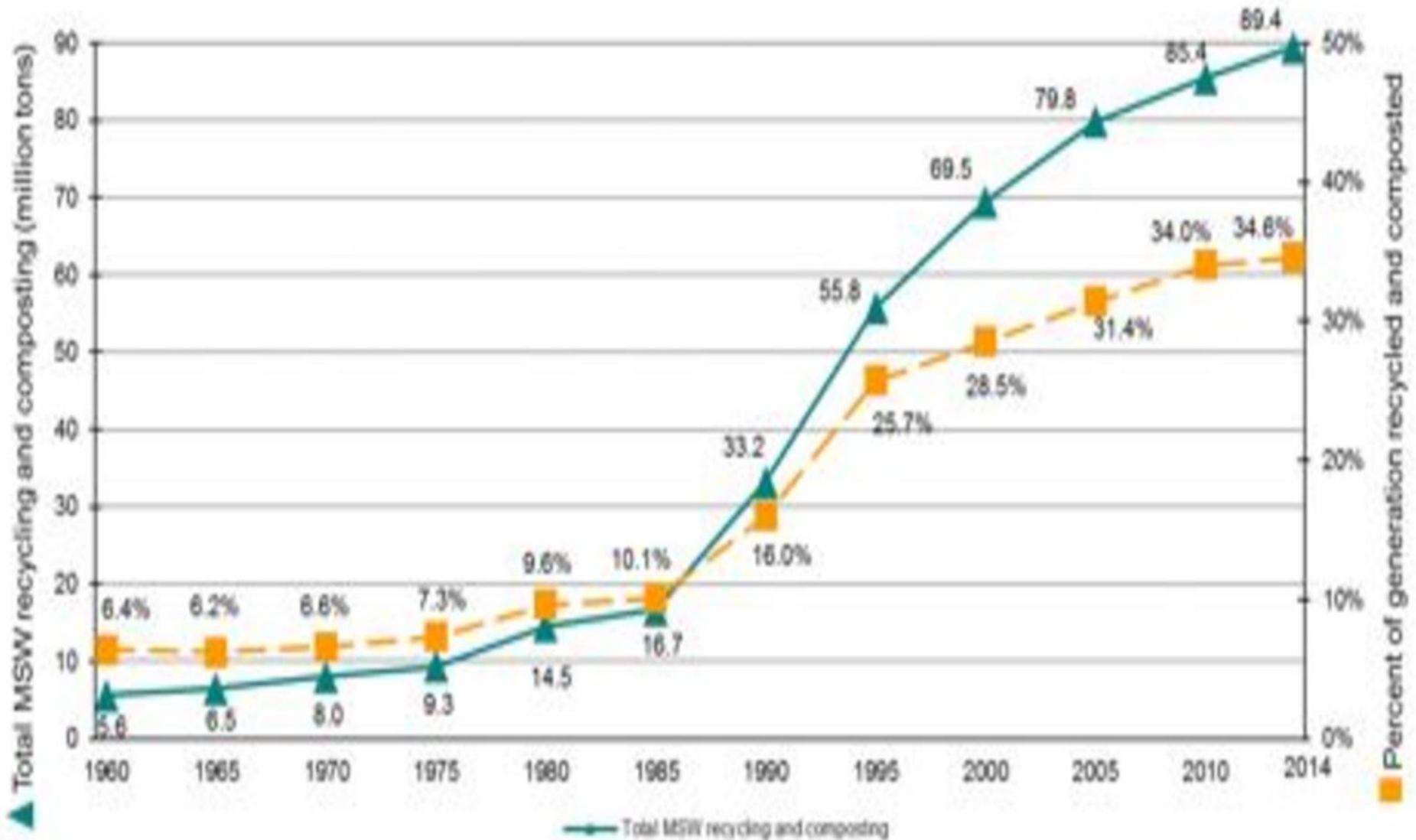


# U.S. Generation of Materials in MSW (1960-2014)



\* "All other" includes primarily wood, rubber and leather, and textiles.

# MSW Recycling and Composting Rates (1960-2011)





Conserving Resources,  
Preventing Waste

# EPA's Food Recovery Challenge







**By 2030:  
Let's cut the amount of food we waste in half.**



**#NoWastedFood**

APRIL IS "WINNING ON REDUCING FOOD WASTE" MONTH



30-40% OF ALL  
AVAILABLE **FOOD**  
IN THE U.S. IS  
**WASTED**

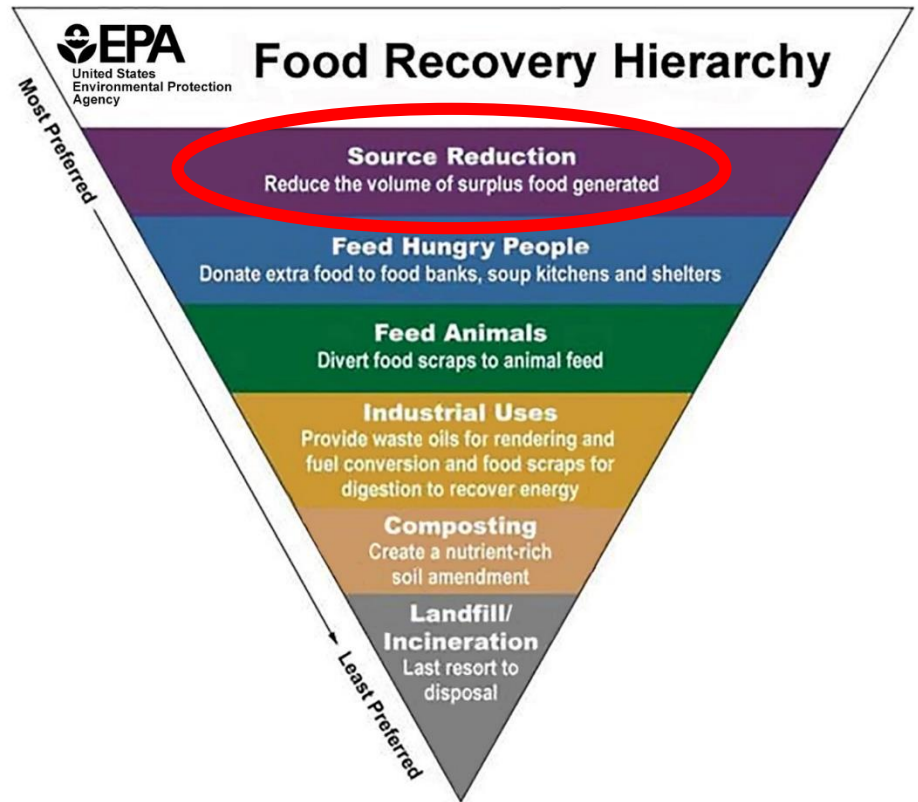
Do your part. Join your federal partners  
in reducing food waste.



# Federal Winning on Reducing Food Waste FY 2019-2020

- Enhance interagency coordination
- Increase consumer education and outreach efforts
- Improve coordination and guidance on food loss and waste measurement
- Clarify and communicate information on food safety, food date labels and food donations
- Collaborate with private industry to reduce food loss and waste across the supply chain
- Encourage food waste reduction by federal agencies in their respective facilities.

# Waste Management Hierarchy





# Waste Reduction Model (WARM)

EPA created the Waste Reduction Model (WARM) to help solid waste planners and organizations track and voluntarily report greenhouse gas (GHG) emissions reductions from several different waste management practices. WARM calculates and totals GHG emissions of baseline and alternative waste management practices—source reduction, recycling, anaerobic digestion, combustion, composting and landfilling.

## Basic Information about WARM



- [What is WARM?](#)
- [WARM Tool](#)
- [Versions of WARM](#)
- [Material Descriptions and Data Sources](#)
- [Frequent Questions about WARM](#)

## Documentation



- [Documentation for Greenhouse Gas Emission and Energy Factors Used in WARM](#)
- [Background Documents](#)

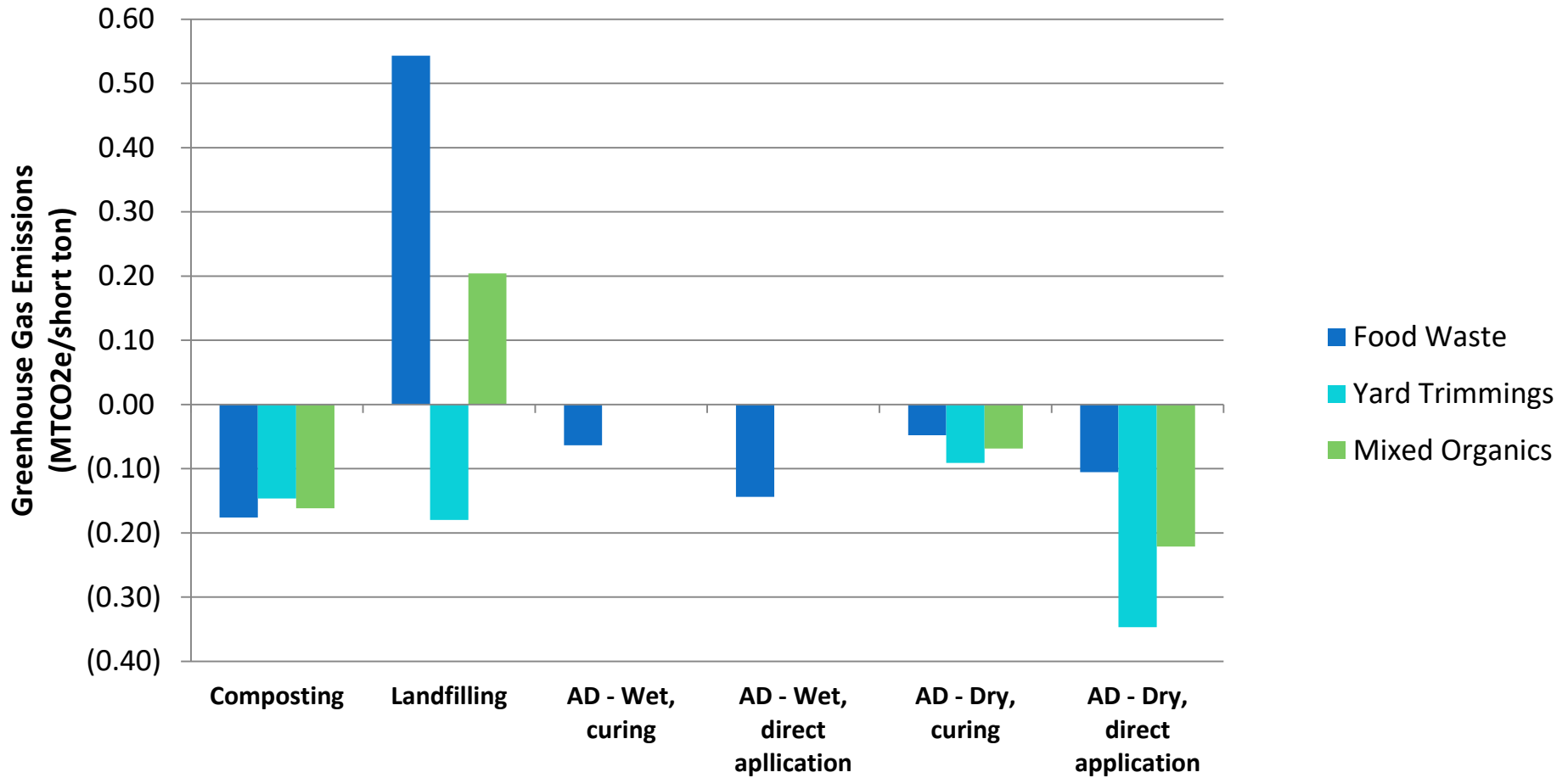
### Related Programs

- [Sustainable Materials Management](#)
- [WasteWise](#)
- [ENERGY STAR](#)
- [Climate Change](#)

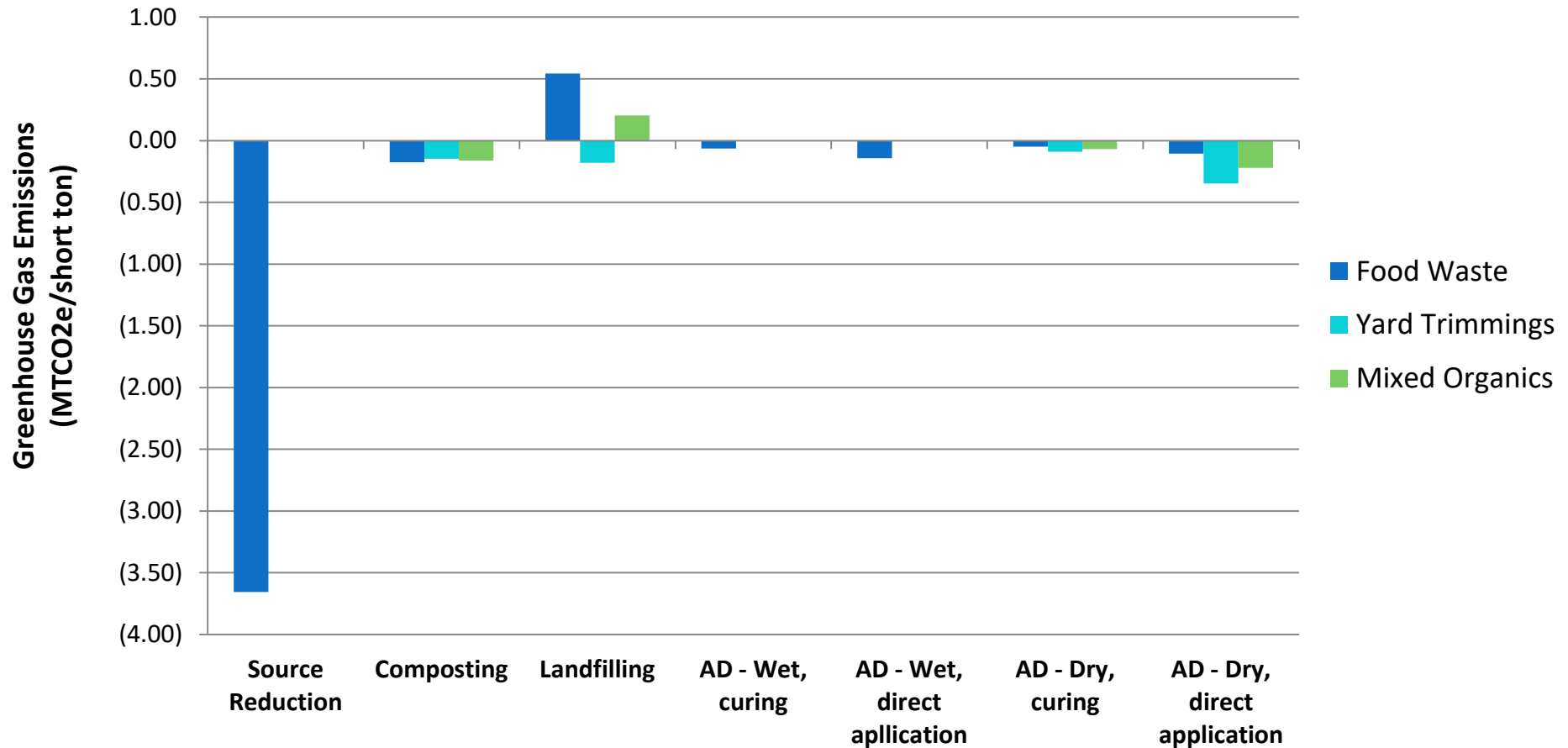
### Other Tools

- [Individual Waste Reduction Model \(iWARM\)](#)
- [Greenhouse Gas Equivalency Calculator](#)
- [Policy and Program Impact Estimator](#)

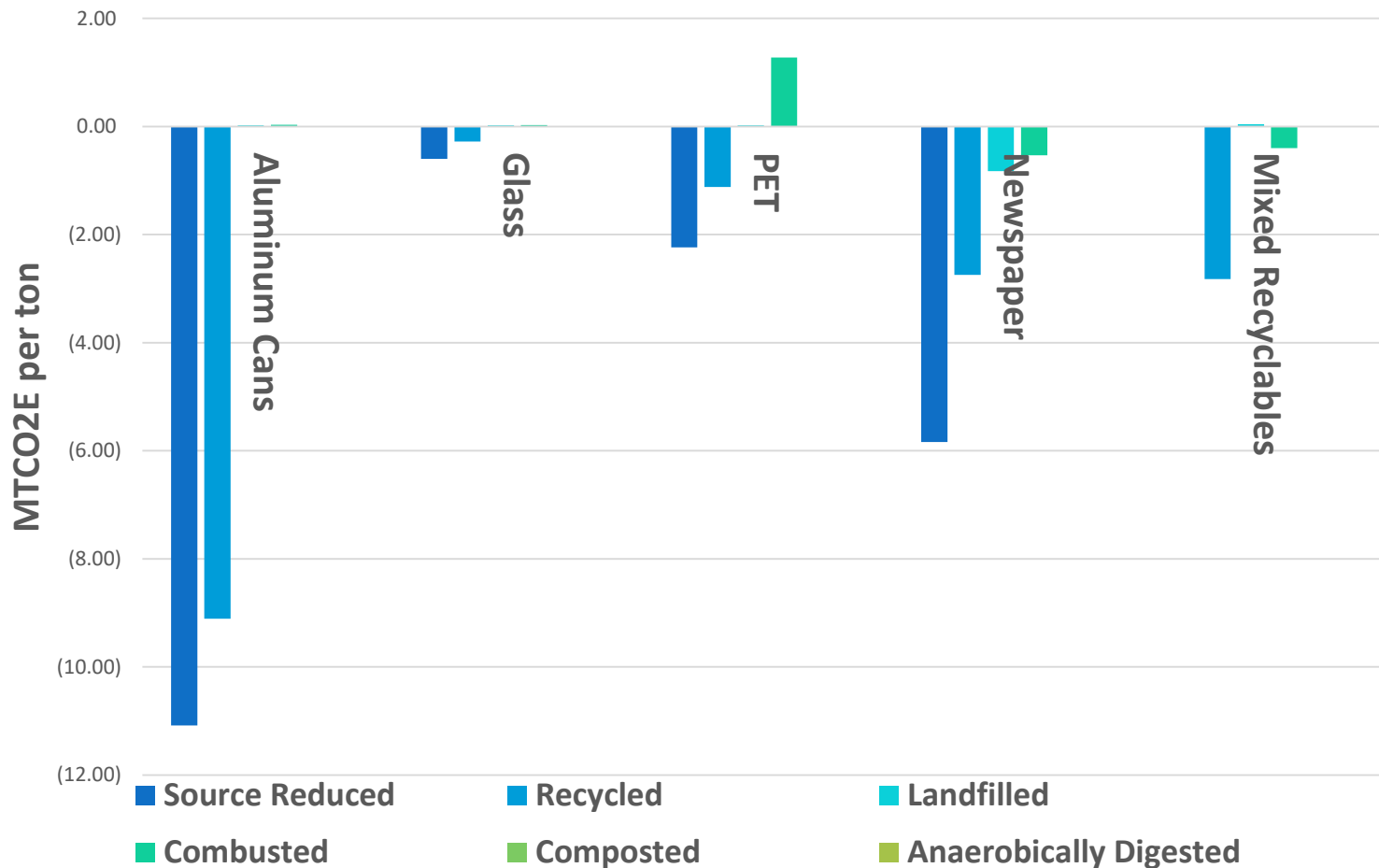
# Organics Results - Comparison



# Organics Results – With Source Reduction



# Other Recyclables





# EPA New England e-mail Updates: WasteWise & Food Recovery Challenge

November 18, 2016

## Updates

- **2016 EPA National WasteWise and Food Recovery Challenge Awards announced**

## Tools/Case Studies

- **Harvard Food Law and Policy Clinic and RI Food Policy Council Legal Fact Sheets for Rhode Island Food Donation, now available**

## Press Release/Articles

- **Spoiler Alert raises \$2.5 million**
- **.Hannaford Supermarkets save \$23M annually through Sustainable operations**
- **Fresh Look At Organics Bans And Waste Recycling Laws, BioCycle Magazine November**
- **The desire to increase organics recovery is there, but is it doable? Resource Recycling**
- **First Bioplastic Made from Cheese Waste, 11/15/16**

## Webinars

- **EPA SMM Web Academy**

## Conferences

# Questions ???

Rob Guillemmin

[guillemmin.robert@epa.gov](mailto:guillemmin.robert@epa.gov)

617-918-1814

